

Education and Training for Social Inclusion

Lida Kita-ETF

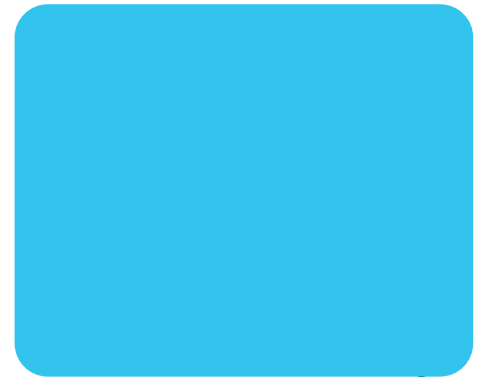
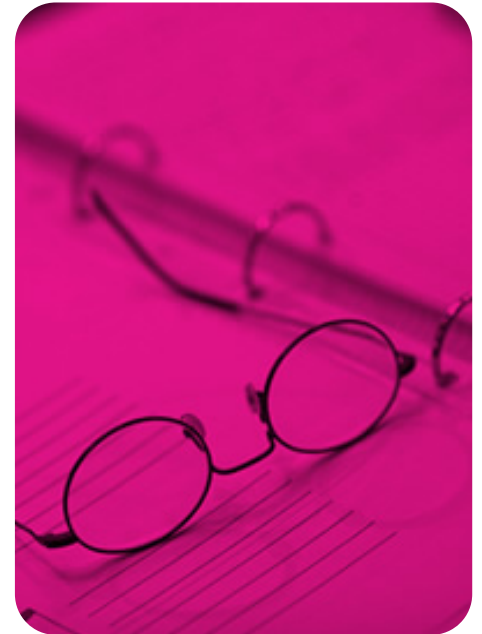
ERI SEE seminar on Teacher
Training

Zagreb, Croatia, 28 May 2009



What is the ETF?

- An official agency of the European Union providing expert advice and support
- Mission: we assist the EU's neighbouring countries in developing quality education and training systems and putting them into practice
- Education and training contributes to increasing prosperity, creating sustainable growth and encouraging social inclusion
- Main partners: Ministries of education and labour, national vocational education organisations, service providers working in vocational education and training and the labour market, other agencies



Why social inclusion?

- The need for cohesive societies based on reconciliation, non-discrimination and equal opportunities
- High on the policy agenda in the EU and the Western Balkans, as socially and culturally diverse societies
- Despite efforts, many people still live in enclaves with serious difficulties in accessing quality education, healthcare and employment
- ETF promotes inclusive education and training policies and practices in Western Balkan countries



Some Challenges :

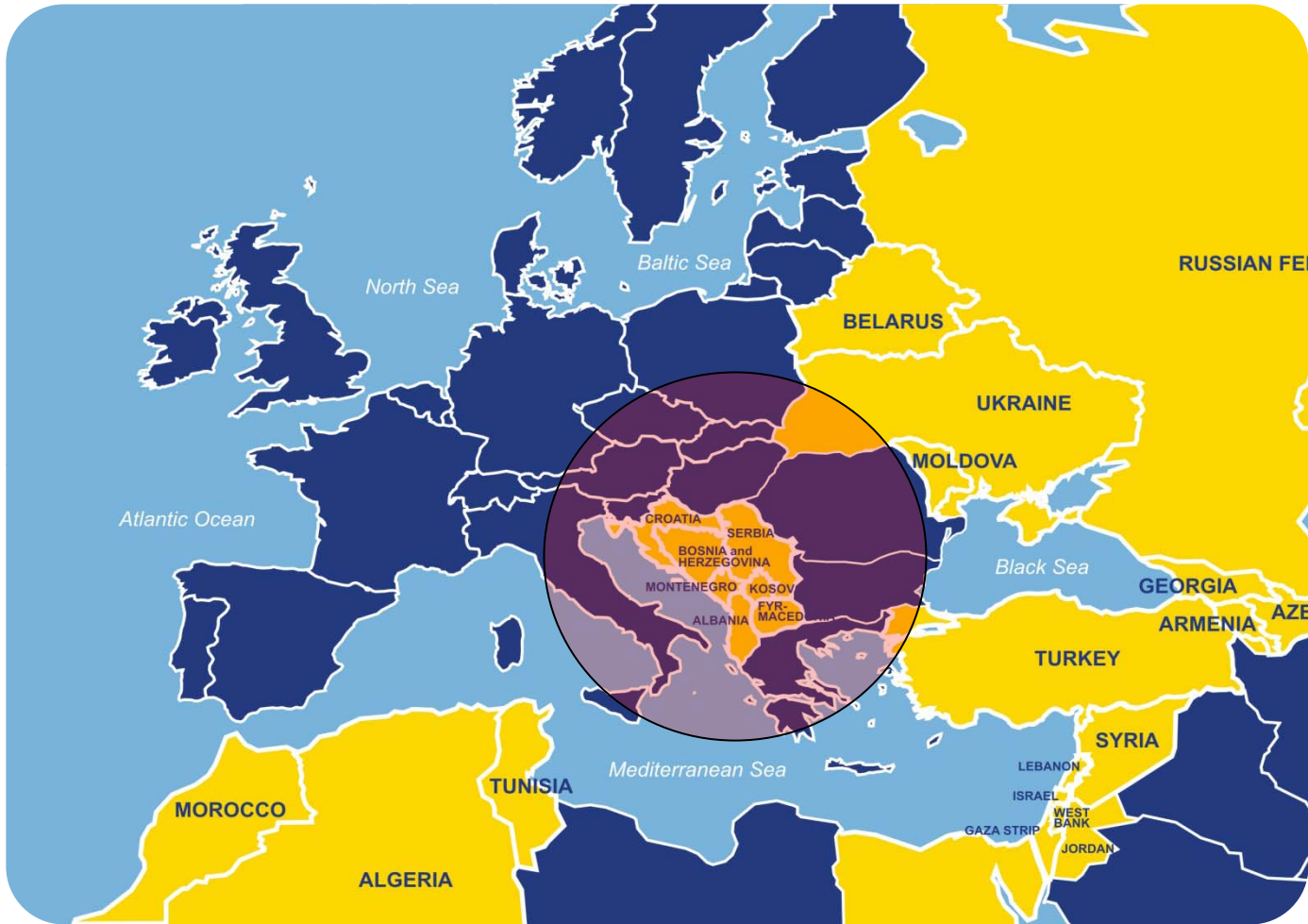
- A major challenge that has been identified concerns the discrepancy between political declarations and their translation into policies and actions.
- The gap between policy vision and policy implementation has much to do with scarce resources, but is also due to limited local institutional and administrative capacities.
- Despite the numerous successful projects funded by different donors, the sustainability and mainstreaming of these initiatives remains an unfinished agenda

Some Challenges :

- These efforts have often relied too much upon external donors
- Long-term solutions imply the full involvement of governments in programme design and implementation.
- Legal framework for the protection of minority rights is a necessary but insufficient condition for social inclusion and integration
- There is a need to go beyond the legislative provisions and to tackle structural and institutional barriers some:
1)identifying specific targets;2)adopting policies.3)establishing action plans and 4)allocating adequate resources

Need for regional cooperation :

- Addressing regional challenges helps to **de-politicise** highly political national issue
- Provides greater opportunity to **pool** and expand strategic **knowledge**
- Enables capacity development through **learning from peers** who have overcome the same challenges
- Contributes to successful lobbying and **accessing** financial resources
- Regional networks can be an efficient forum of **bringing** together national/ regional/EU and other international **learning in one place.**



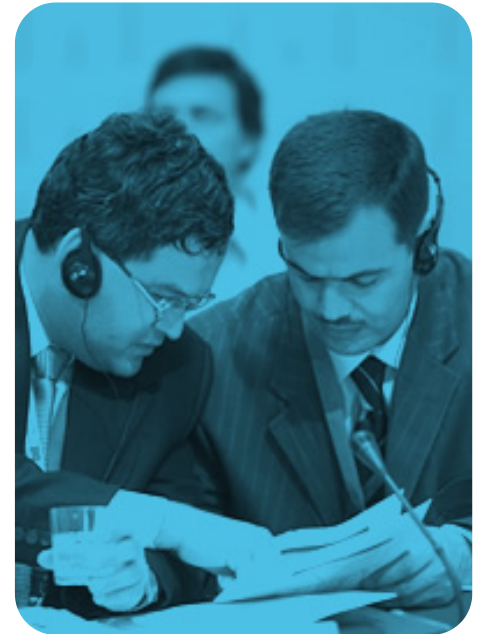
What is the ETF regional project about?

- Sharing experience and opinions between countries and with other EU countries, agencies and international organisations
- Developing capacity in the countries so that they can implement education and training programmes that are more inclusive
- Identifying and addressing the needs of all learners in education and training



The Western Balkan Regional Policy Network aims:

- To influence national and regional programming for the social inclusion of ethnic groups in education and training
- To facilitate national and regional discussions to reach a consensus on performance indicators
- To monitor policy implementation in education and training for better social inclusion and integration



Project conceptualisation

- Continues and builds on the ETF IPA SOC 2007-2008 work
- Consultative process (IPA country national teams, DGs, EC Delegations, experts, most active donors etc.)
- Capitalises and complements country-level and EU developments in social inclusion in education and training



Research activity

- Research into policies and practices for the preparation of teachers for inclusive education
- Country analysis and reports of policies and practices regarding the pre-service and in-service training of teachers to identify issues, challenges and good practice in the seven countries



Reporting

- Preparation of a cross country report identifying the main findings from the country analyses
- Cross country report used as a basis for informing country and regional level discussions involving country teams and other stakeholders in the European Commission as well as other relevant development partners



For further information

Visit our website:

www.etf.europa.eu

Contact us with your comments:

lki@etf.europa.eu

